



smico



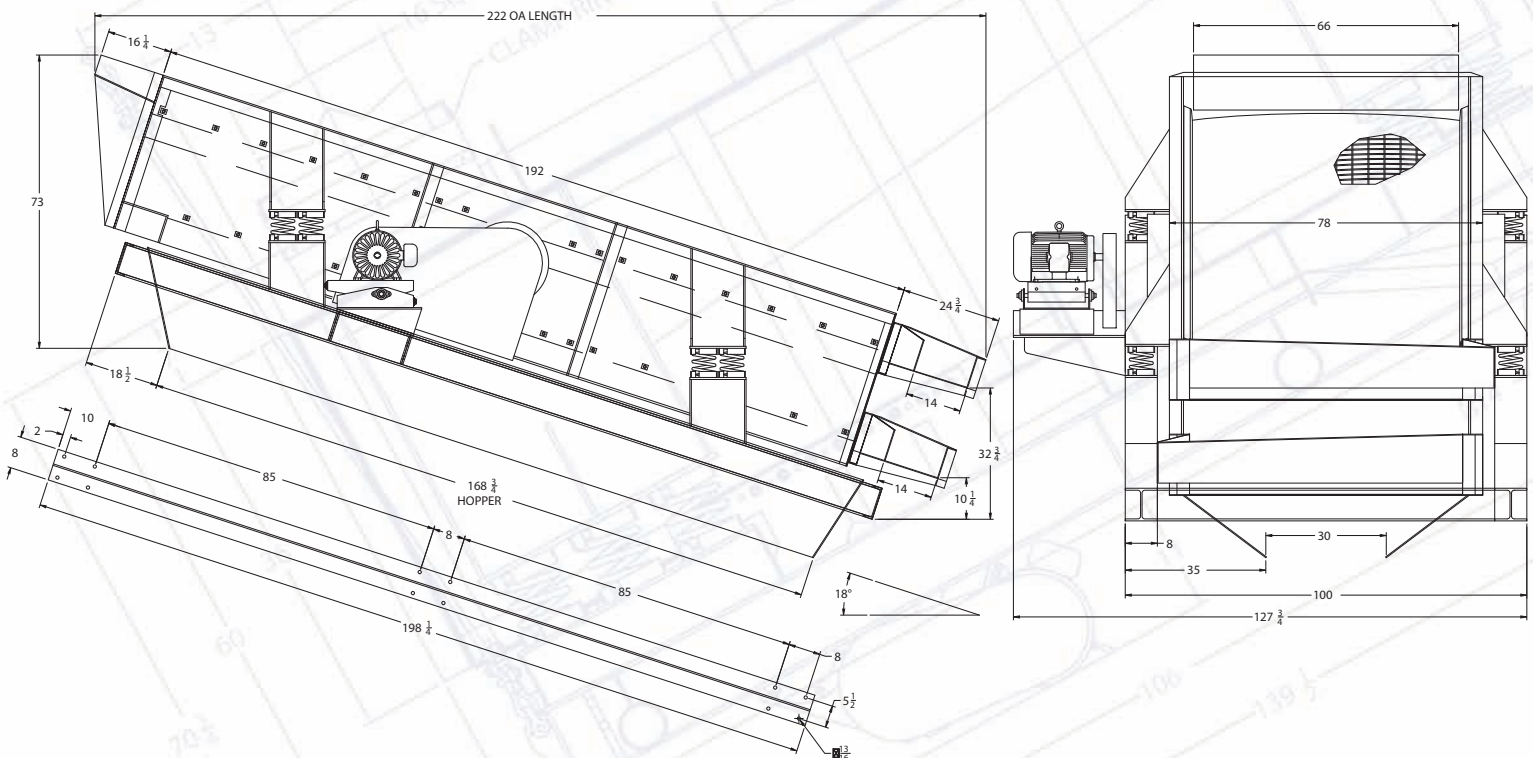
DH2 SERIES VIBRATING SCREENER

SMICO MANUFACTURING COMPANY has been providing 100% American made screening equipment since the 1930's. The original centroid mounted, positive eccentric drives are the mainstay of the line with several other actions added to fulfill the company goal of providing the best screening motion for every screening application, wet or dry.

SMICO screening equipment is routinely custom fit to both the application and the installation. We can provide inlets to match feed systems, outlets to match take away systems, legs or cables to meet height requirements, and even retrofit our screens to replace old screeners which have been discontinued.

SMICO vibrating screeners provide Low Operating Cost, Excellent Product Classification and High Production with Minimum Maintenance.

- Rugged – Engineered for a long service life with steel plate construction.
- Dependable – Low maintenance grease lubricated two or four bearing top or centroid mounted drive designed for field service.
- Highly Efficient – Conveying motion is parallel to sides for minimum degradation, designed to run at 900-1750 RPM, producing up to 5Gs acceleration.
- Flexibility – Simple adjustments allow you to tune amplitude and frequency to your application.
- Smooth – Vibration isolation with coil springs and pivoting motor base.
- Versatile – Custom fit to your application with our many special features or stock machines for immediate installation.
- Made with pride in Oklahoma.





smico



DH2 SERIES VIBRATING SCREENER

Typical Applications:

- Aggregate
- Sand
- Asphalt Ingredients – Scalping to multi-grade sorting

SMICO Manufacturing Co., Inc.

Oklahoma City, OK 73127

P: 405-946-1461 F: 405-946-1472

E: sales@smico.com W: www.smico.com

Options:

- Self Cleaning Screens
- Screen Washers
- Perforated Plates
- Aspirators
- Rubber Isolators
- Piano Wire
- Enclosures
- Poly Decks
- Woven Wire
- Legs
- Oil Lubrication
- Weir Feeders
- Cable Suspension
- Deck Selector / Bypass
- Spouts / Chutes
- Wear Liners
- High Temperature Features
- Hoppers

Sizes:

- 24" to 96" wide by 8' to 24' long
- One to four screen decks
- 60 to 150 mm FAG spherical bearings

